

Alberta This plan may not be commercially re-distributed, transferred or manipulated in any form without the specific written consent of Alberta Land Titles

**CERTIFICATE : SECTION 47, THE SURVEYS ACT**

LAND TITLES OFFICE  
**PLAN NO. 081 5793**  
 ENTERED AND REGISTERED  
 ON December 22, 2008  
 INSTRUMENT NO : 081 469 169  
*P. Pitman*  
 A.D. REGISTRAR

REGISTERED ON THE October 6, 2011  
 AS NUMBER 111 257 252  
 ALL STATUTORY POSTS WERE PLACED IN THE GROUND BETWEEN THE DATES OF  
November 1, 2010 AND October 4, 2011  
 AND ARE POSITIONED IN ACCORDANCE WITH THE CO-ORDINATES SHOWN ON  
 SHEET 1 OF 1, EXCEPT FOR THE FOLLOWING  
 - #28 - Placed drill hole in concrete  
 - #1 - Placed shortened Statutory Iron Post due to proximity of utility line.

*P. Pitman*  
 REGISTRAR

THE CITY OF CALGARY  
 PLAN SHOWING SURVEY OF  
**SUBDIVISION**  
 AFFECTING  
 LOT 1, BLOCK 1, PLAN 021 2150  
 ALL WITHIN THE  
 N.W. 1/4 SEC. 14, TWP. 24, RGE. 1, W.5th. M.  
**ALBERTA.**

2008  
 BY: TOM C. MEDLICOTT, A.L.S.  
 SCALE : 1 : 500



- LEGEND:**
- Portion to be Registered by this survey is outlined thus .....
  - Statutory Iron Posts found are shown thus .....
  - Statutory Iron Posts planned and marked P085 are shown thus .....
  - Beginning and End of Curves are shown thus .....
  - Concrete Nails found are shown thus .....
  - Statutory Iron Posts found or placed are numbered thus .....
  - Curve Centre Co-ordinates are numbered thus .....
  - Reference Monuments are numbered thus .....
  - The Positions where Iron Posts are to be placed Pursuant to Section 47 of the Surveys Act are numbered thus .....
  - Alberta Survey Control Markers (ASCM) found are shown thus .....

**NOTES:**

Distances are shown in metres and decimals thereof  
 Distances along curves are ARC measurements.  
 Area to be Registered contains 2.056 hectares.  
 This plan consists of 5 lots.  
 Bearings are GRID and were derived from GPS observations between ASCM's as shown.

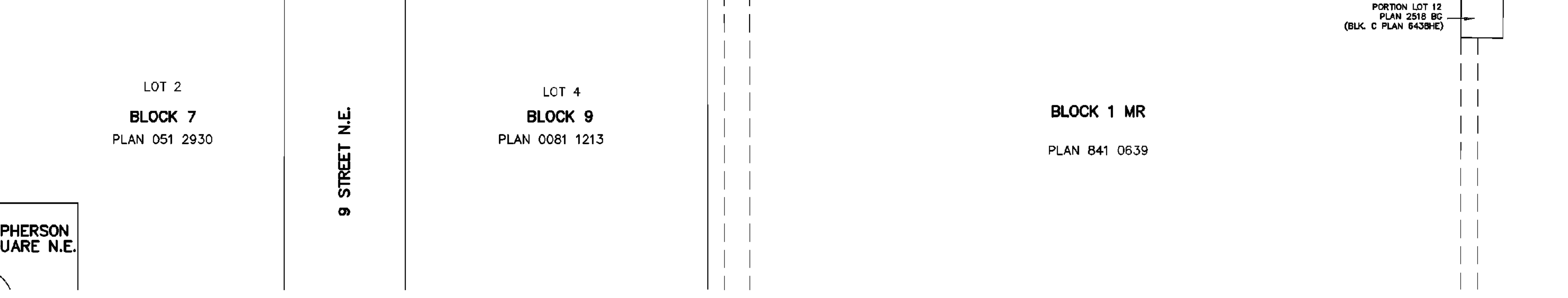
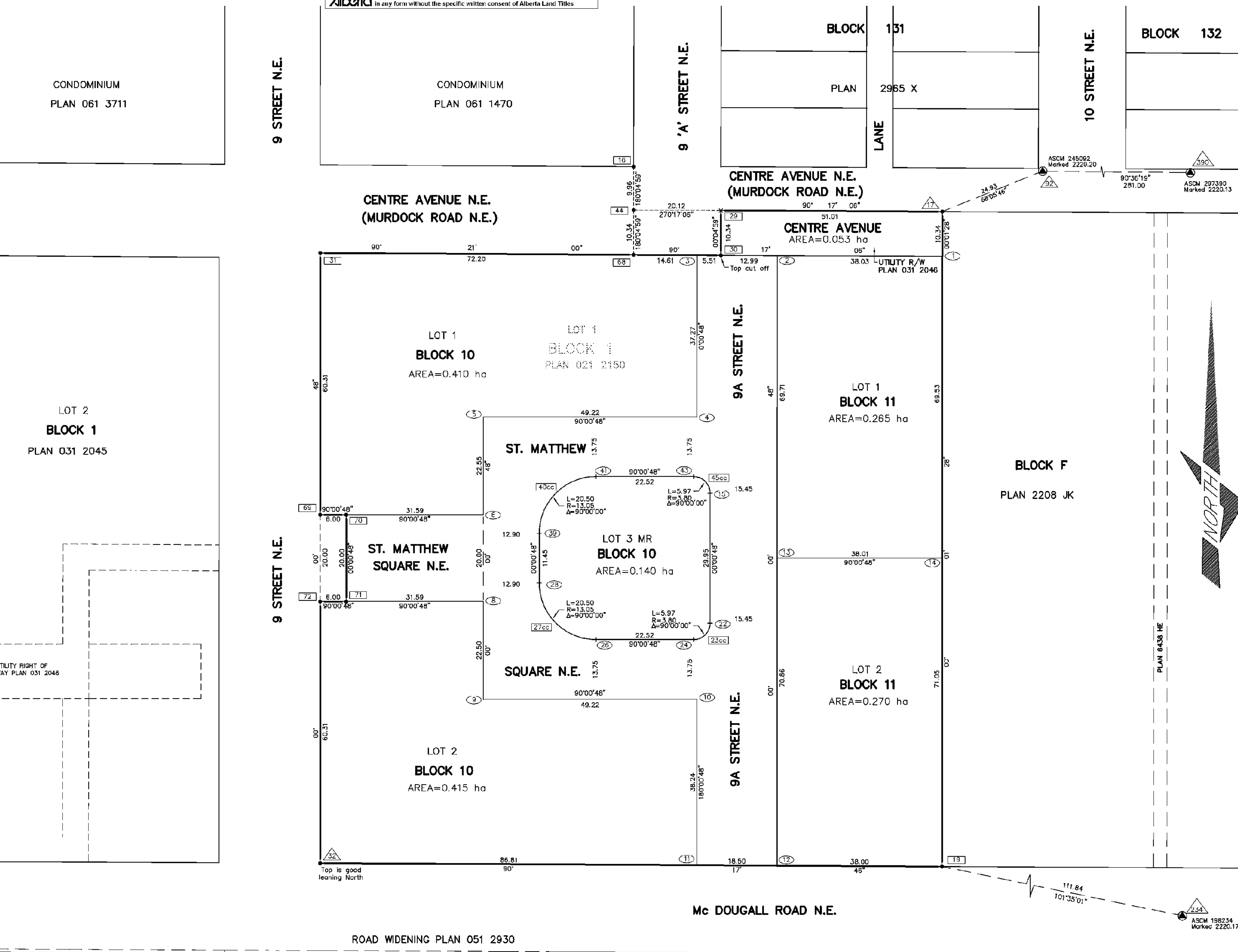
DATUM : NAD 83  
 PROJECTION : 3° Transverse Mercator  
 REFERENCE MERIDIAN : 114° West  
 COMBINED FACTOR : 0.999739

CO-ORDINATE VALUES FOR POSITIONS OCCUPIED BY MONUMENTS FOUND OR PLACED BY THIS SURVEY, SURVEY CONTROL MARKERS USED, REFERENCE MONUMENTS INSTALLED AND THE LOCATION OF ALL MONUMENTS TO BE PLACED IN ACCORDANCE WITH SECTION 47 OF THE SURVEYS ACT, ARE SHOWN IN A TABLE OF COORDINATES ON THIS PLAN.

- ABBREVIATIONS: (WHERE APPLICABLE)**
- Found abbreviated thus .....
  - Placed abbreviated thus .....
  - Mark abbreviated thus .....
  - Re-established abbreviated thus .....
  - Established abbreviated thus .....
  - Temporary abbreviated thus .....
  - Marker Post abbreviated thus .....
  - Counter sunk abbreviated thus .....
  - Statutory Iron Post abbreviated thus .....
  - Hectare abbreviated thus .....
  - Municipal Reserve abbreviated thus .....
  - Area in square metres abbreviated thus .....
  - Section abbreviated thus .....
  - Township abbreviated thus .....
  - Range abbreviated thus .....
  - Meridian abbreviated thus .....
  - North abbreviated thus .....
  - East abbreviated thus .....
  - South abbreviated thus .....
  - West abbreviated thus .....
  - Right of Way abbreviated thus .....
  - Utility abbreviated thus .....
  - Public Utility lot abbreviated thus .....
  - Markings abbreviated thus .....
  - Legal Subdivision abbreviated thus .....
  - Overland Drainage abbreviated thus .....
  - Length of Arc abbreviated thus .....
  - Radius of Curvature abbreviated thus .....
  - Radial Bearing abbreviated thus .....
  - Central Angle abbreviated thus .....

**GRID COORDINATES**

POINT	NORTHING	EASTING	POINT	NORTHING	EASTING
1	5657334.823	-2675.637	27	5657259.609	-2755.427
2	5657335.012	-2715.853	28	5657259.612	-2768.473
3	5657335.104	-2733.148	29	5657345.415	-2728.628
4	5657297.844	-2732.157	30	5657335.077	-2728.643
5	5657297.855	-2781.36	31	5657335.617	-2818.936
6	5657278.311	-2781.366	32	5657195.028	-2818.959
7	5657255.316	-2791.37	33	5657271.056	-2763.471
8	5657232.822	-2781.376	40	5657271.056	-2755.424
9	5657232.811	-2732.172	41	5657284.103	-2755.421
10	5657232.811	-2732.172	42	5657284.098	-2732.310
11	5657184.379	-2732.18	43	5657284.098	-2745.740
12	5657184.381	-2713.886	44	5657255.515	-2745.740
13	5657285.323	-2713.869	45	5657280.288	-2732.311
14	5657285.314	-2675.667	68	5657335.177	-2748.755
15	5657280.298	-2729.117	69	5657275.320	-2818.951
16	5657335.472	-2746.725	70	5657275.318	-2818.952
17	5657345.167	-2675.633	71	5657255.324	-2818.957
18	5657184.287	-2675.698	72	5657255.325	-2818.955
19	5657250.355	-2729.119	82	5657354.460	-2652.508
23	5657250.359	-2732.918	231	5657171.635	-2565.162
24	5657246.557	-2732.919	390	5657351.492	-2371.632
26	5657246.563	-2755.730			



**SURVEYOR:**  
 NAME: TOM C. MEDLICOTT, A.L.S.  
 SURVEYED BETWEEN THE DATES  
 DECEMBER 14, 1999  
 AND NOVEMBER 28, 2008  
 IN ACCORDANCE WITH THE  
 PROVISIONS OF THE SURVEYS ACT



**REGISTERED OWNERS:**  
 CITY OF CALGARY

**SUBDIVISION AUTHORITY:**  
 NAME: THE CITY OF CALGARY  
 FILE NO. : SB2006-0331

**D.A. Watt Consulting**  
 #310, 3016 - 6th Avenue N.E.  
 Calgary, AB T2A 0K4  
 Phone: (403) 273-8001  
 Fax: (403) 273-3440

DRAWING FILE NAME: 15779-3-LDWG  
 DRAWN BY: M.J. RICHARDS CLIENT: CITY OF CALGARY  
 CHECKED BY: T.C.M. FILE No: 15779.3