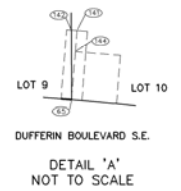
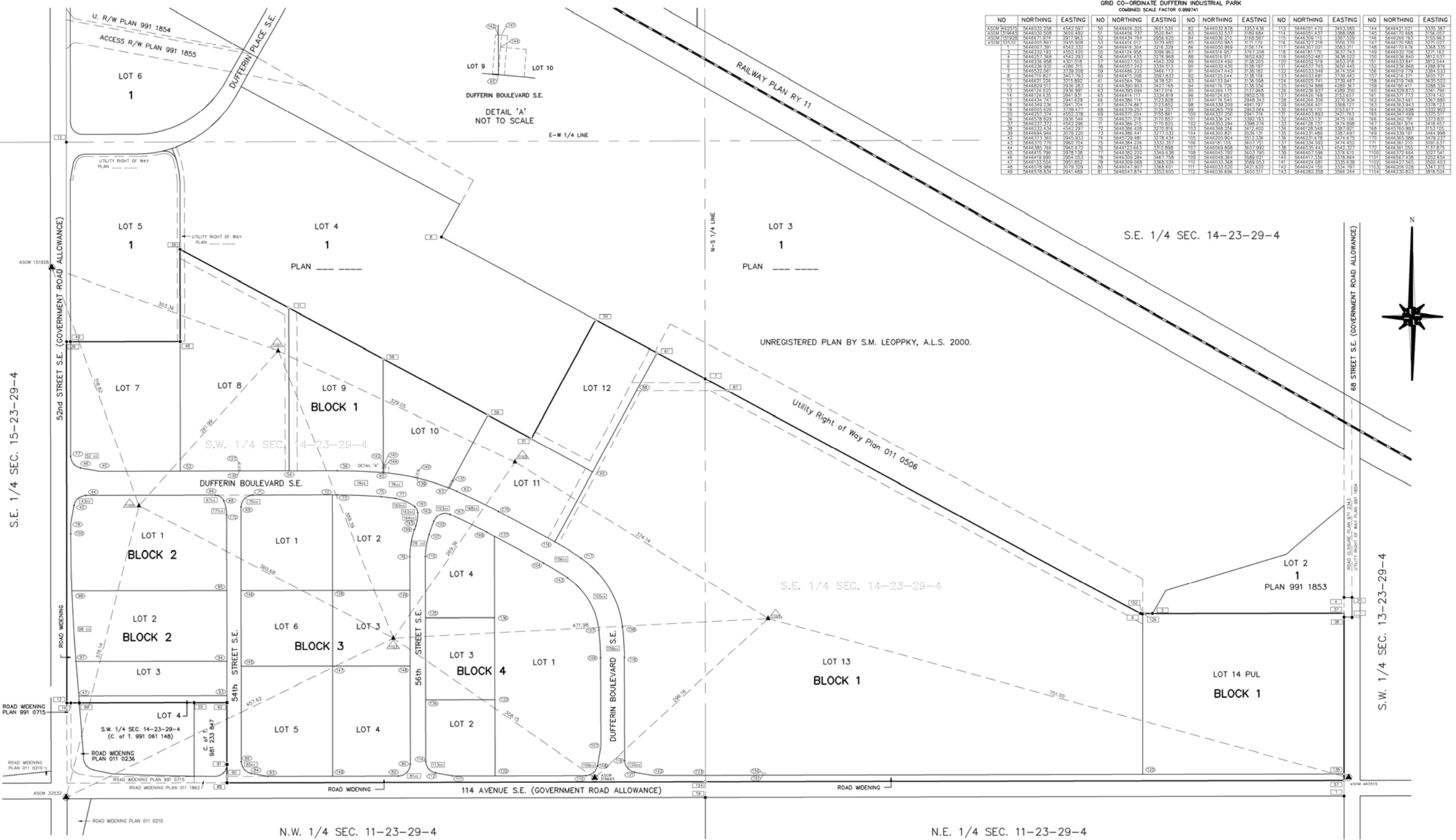


LAND TITLES OFFICE
PLAN NO. 0112600
ENTERED AND REGISTERED
ON September 25, 2001
INSTRUMENT NO.: 011281071
Keith Stang
A.D. REGISTRAR

SHEET 2 OF 2

GRID CO-ORDINATE DUFFERIN INDUSTRIAL PARK
COMBINED SCALE FACTOR 0.999741

NO	NORTHING	EASTING	NO	NORTHING	EASTING	NO	NORTHING	EASTING	NO	NORTHING	EASTING	NO	NORTHING	EASTING
1	444444.00	444444.00	2	444444.00	444444.00	3	444444.00	444444.00	4	444444.00	444444.00	5	444444.00	444444.00
6	444444.00	444444.00	7	444444.00	444444.00	8	444444.00	444444.00	9	444444.00	444444.00	10	444444.00	444444.00
11	444444.00	444444.00	12	444444.00	444444.00	13	444444.00	444444.00	14	444444.00	444444.00	15	444444.00	444444.00
16	444444.00	444444.00	17	444444.00	444444.00	18	444444.00	444444.00	19	444444.00	444444.00	20	444444.00	444444.00
21	444444.00	444444.00	22	444444.00	444444.00	23	444444.00	444444.00	24	444444.00	444444.00	25	444444.00	444444.00
26	444444.00	444444.00	27	444444.00	444444.00	28	444444.00	444444.00	29	444444.00	444444.00	30	444444.00	444444.00
31	444444.00	444444.00	32	444444.00	444444.00	33	444444.00	444444.00	34	444444.00	444444.00	35	444444.00	444444.00
36	444444.00	444444.00	37	444444.00	444444.00	38	444444.00	444444.00	39	444444.00	444444.00	40	444444.00	444444.00
41	444444.00	444444.00	42	444444.00	444444.00	43	444444.00	444444.00	44	444444.00	444444.00	45	444444.00	444444.00
46	444444.00	444444.00	47	444444.00	444444.00	48	444444.00	444444.00	49	444444.00	444444.00	50	444444.00	444444.00



THE CITY OF CALGARY
DUFFERIN INDUSTRIAL PARK
PLAN SHOWING SURVEY OF
SUBDIVISION
AFFECTING PORTIONS OF THE
S.W. 1/4 SEC. 14, TWP. 23, RGE. 29, W. 4th. M.
and
S.E. 1/4 SEC. 14, TWP. 23, RGE. 29, W. 4th. M.
ALBERTA.

2001
BY: TOM C. MEDICOTT, A.L.S.
SCALE : 1 : 2000
LEGEND :

- Portion to be Registered by this plan is outlined thus.....
- Statutory Iron Posts found are shown thus.....
- Statutory Iron Posts established and stamped POBS are shown thus.....
- Beginning and End of Curves are shown thus.....
- Bearings are GRID and are derived from ASCM lines between ASCM 319645 & ASCM 462515
- Reference Monuments are numbered thus.....
- Statutory Iron Posts found or placed are numbered thus.....
- 1.2m iron bars placed are shown thus.....
- Curve Centre Co-ordinates are numbered thus.....
- The Positions where Iron Posts are to be placed Pursuant to Section 43 of the Survey Act are numbered thus.....
- Alberta Survey Control Marker (ASCM) shown thus.....
- Datum : NAD 83
- PROJECTION : 3 Transverse Mercator (Reference Mer. 114°)
- COMBINED FACTOR : 0.999741
- Found abbreviated thus.....
- Placed abbreviated thus.....
- Mark abbreviated thus.....
- Marker Post abbreviated thus.....
- Counter sunk abbreviated thus.....
- Statutory Iron Post abbreviated thus.....
- Hectare abbreviated thus.....
- Rodial Bearing shown thus.....
- Central Angle shown thus.....
- Municipal and School Reserve abbreviated thus.....
- Section abbreviated thus.....
- Township abbreviated thus.....
- Range abbreviated thus.....
- Meridian abbreviated thus.....
- North abbreviated thus.....
- East abbreviated thus.....
- South abbreviated thus.....
- West abbreviated thus.....
- Right of Way abbreviated thus.....
- Utility abbreviated thus.....
- Public Utility Lot abbreviated thus.....

SURVEYOR:
NAME: TOM C. MEDICOTT, A.L.S.
DATES OF SURVEY: DECEMBER 10, 1999 TO SEPTEMBER 17, 2001

REGISTERED OWNERS:
CITY OF CALGARY

SUBDIVISION AUTHORITY:
NAME: THE CITY OF CALGARY
FILE NO.: 20001/3241
DATE APPROVED:

DRAWING FILE NAME: 14157-PN15.DWG
DRAWN BY: M. RICHARDS
CHECKED BY: T.C.M.

CLIENT: CITY OF CALGARY
FILE No: 14157