

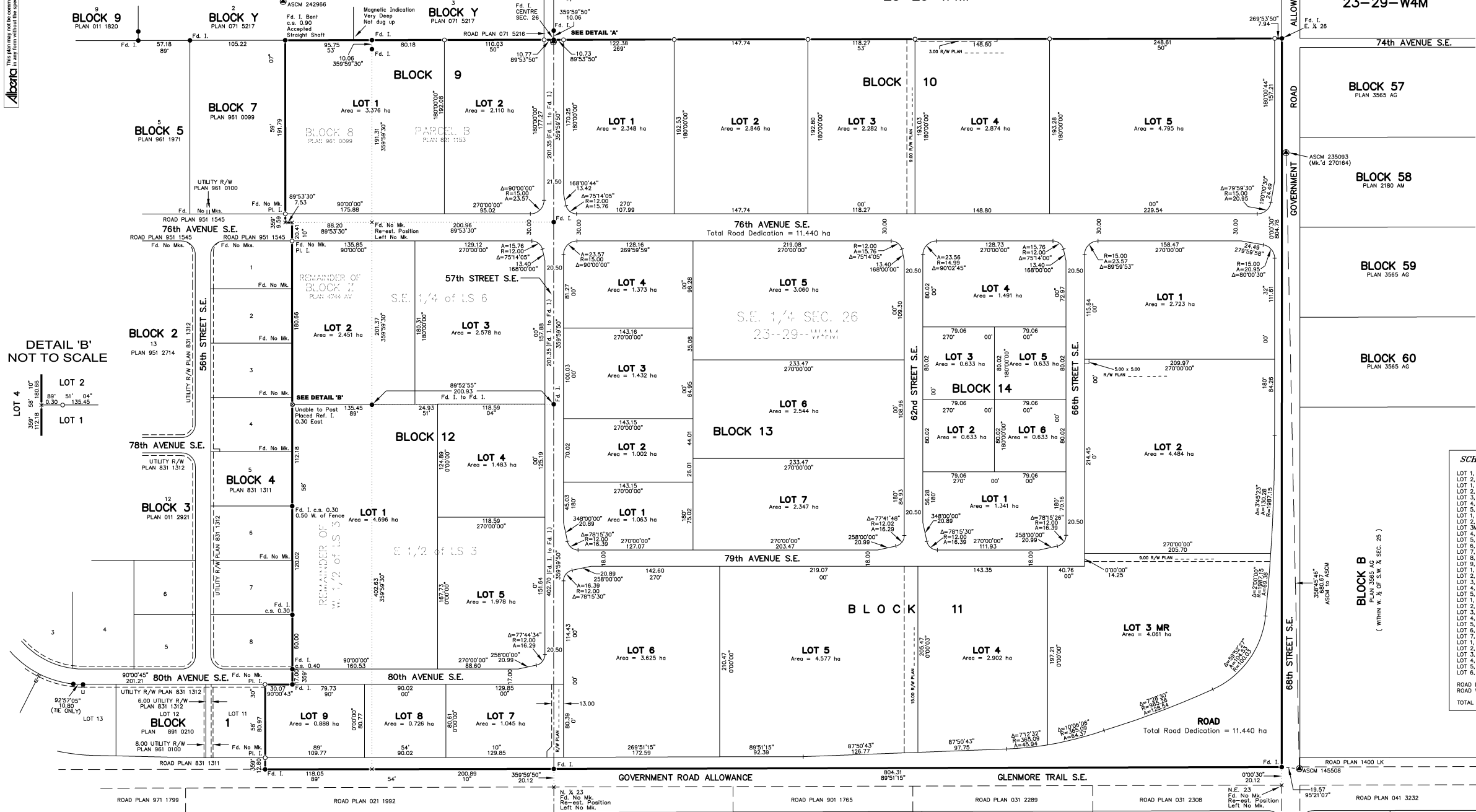
Alberta This plan may not be commercially re-distributed, transferred or manipulated in any form without the specific written consent of Alberta Land Titles.

DETAIL 'A' NOT TO SCALE

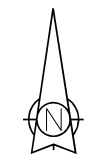
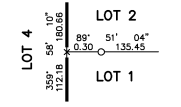
N.E. 1/4 SEC. 26 23-29-W4M

N.E. 1/4 SEC. 26 23-29-W4M

N.W. 1/4 SEC. 25 23-29-W4M



DETAIL 'B' NOT TO SCALE



SURVEYOR
NAME: IAN EMMERSON, A.L.S.
Surveyed between the dates of January 3, 2007 and October 1, 2008
in accordance with the provisions of the Surveys Act

REGISTERED OWNERS
CITY OF CALGARY

APPROVING AUTHORITY
CITY OF CALGARY
FILE NO.: SB2007-0811
DATE APPROVED: February 3, 2009

REGISTRAR LAND TITLES OFFICE
PLAN No. **0911295**
ENTERED AND REGISTERED
ON **March 3, 2009**
INSTRUMENT No. **091 058 414**
Keith Stang
A.D. REGISTRAR

CALGARY, ALBERTA
PLAN SHOWING
SURVEY OF SUBDIVISION
AFFECTING
BLOCK 8, PLAN 961 0099
PARCEL B, PLAN 821 1153
BLOCK Z, PLAN 4744 AV
AND
S. 1/2 OF SEC. 26, TWP. 23, RGE. 29, W.4M

BY IAN EMMERSON, A.L.S., 2007-2008
SCALE: 1:2000

0 20 40 60 80 100 120 140 160 180 200 metres

LEGEND

AREA TO BE REGISTERED BOUNDED THIS:

STATUTORY IRON POSTS FOUND SHOWN THIS:

STATUTORY IRON POSTS PLACED SHOWN THIS:

TEMPORARY POINT SHOWN THIS:

ALBERTA SURVEY CONTROL MARKER SHOWN THIS:

SHEET 2 OF 2 CONTAINS REFERENCE CONTROL NETWORK, KEY PLAN OF POINT NUMBERS AND TABLE OF COORDINATES

THE POSITION WHERE IRON POSTS ARE TO BE PLACED PURSUANT TO SECTION 47 OF THE SURVEYS ACT ARE SHOWN THIS:

CURVE CENTRE CO-ORDINATES SHOWN THIS:

REFERENCE MONUMENTS SHOWN THIS:

ABBREVIATIONS

The Following Abbreviations May Appear On This Plan

A	Arc Distance	N	North
A.L.S.	Alberta Land Surveyor	NAD	North American Datum
ASCM	Alberta Survey Control Marker	No.	Number
c.s.	countersunk	Pl.	Placed
E.	East	R	Radius
Fd.	Found	Ref.	Reference
GPS	Global Positioning System	Rge.	Range
ha	Hectare	Sec.	Section
I.	Intersection	S	South
M.	Metric	TUC	Transportation Utility Corridor
Mk.	Mark	TM	Transverse Meridian
Mk'd	Marked	Twp.	Township
Mks.	Marks	W	West
Re-est.	Re-established	R/W	Right of Way
		Δ	Angle Subtended by Arc

NOTES

Distances are in metres and decimals thereof
Datum: NAD83
Projection: 3TM
Reference Meridian: 114° Longitude
Combined Scale Factor: 0.999740

Bearings are grid bearings and are derived from GPS observations

AREA

Total area to be subdivided = 88.473 ha

CERTIFICATE: SECTION 47, SURVEYS ACT

REGISTERED ON _____ AS NUMBER _____
ALL STATUTORY MONUMENTS WERE PLACED IN THE GROUND BETWEEN THE DATES OF _____ AND _____ AND ARE POSITIONED IN ACCORDANCE WITH CO-ORDINATES SHOWN ON SHEET 2 OF 2 EXCEPT FOR THE FOLLOWING:

REGISTRAR

SCHEDULE OF AREAS

LOT 1, BLOCK 9	3,376 ha
LOT 2, BLOCK 9	2,110 ha
LOT 1, BLOCK 10	2,348 ha
LOT 2, BLOCK 10	2,846 ha
LOT 3, BLOCK 10	2,682 ha
LOT 4, BLOCK 10	2,874 ha
LOT 5, BLOCK 10	4,795 ha
LOT 1, BLOCK 11	2,723 ha
LOT 2, BLOCK 11	4,484 ha
LOT 3MR, BLOCK 11	4,061 ha
LOT 4, BLOCK 11	2,902 ha
LOT 5, BLOCK 11	4,577 ha
LOT 6, BLOCK 11	3,625 ha
LOT 7, BLOCK 11	1,045 ha
LOT 8, BLOCK 11	0,728 ha
LOT 9, BLOCK 11	0,888 ha
LOT 1, BLOCK 12	4,696 ha
LOT 2, BLOCK 12	2,451 ha
LOT 3, BLOCK 12	2,578 ha
LOT 4, BLOCK 12	1,483 ha
LOT 5, BLOCK 12	1,978 ha
LOT 1, BLOCK 13	1,063 ha
LOT 2, BLOCK 13	1,002 ha
LOT 3, BLOCK 13	1,432 ha
LOT 4, BLOCK 13	1,373 ha
LOT 5, BLOCK 13	3,960 ha
LOT 6, BLOCK 13	2,544 ha
LOT 7, BLOCK 13	2,347 ha
LOT 1, BLOCK 14	1,341 ha
LOT 2, BLOCK 14	0,633 ha
LOT 3, BLOCK 14	0,633 ha
LOT 4, BLOCK 14	1,491 ha
LOT 5, BLOCK 14	0,633 ha
LOT 6, BLOCK 14	0,633 ha
ROAD DEDICATION	7,739 ha
ROAD WIDENING	3,701 ha
TOTAL	88.473 ha

THE CITY OF CALGARY
LAND INFORMATION & MAPPING
GEOSPATIAL FIELD SOLUTIONS
Surveyed: C.H. & G.K. Drawn: C.K. Checked: I.E.
File No.: 1075702-SUB01 Date: NOV-03-2008