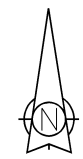


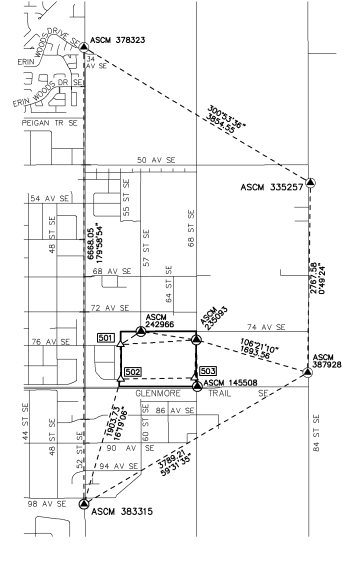
This plan may not be correctly re-distributed, transferred or manipulated in any form without the specific written consent of Alberta Land Titles

REGISTRAR
LAND TITLES OFFICE
PLAN No. 0911295
ENTERED AND REGISTERED
ON March 3, 2009
INSTRUMENT No. 091 058 414
Keith Stang
A.D. REGISTRAR

CALGARY, ALBERTA
PLAN SHOWING
**CONTROL NETWORK &
TABLE OF CO-ORDINATES**
AFFECTING
BLOCK 8, PLAN 961 0099
PARCEL B, PLAN 821 1153
BLOCK Z, PLAN 4744 AV
AND
S. 1/2 OF SEC. 26, TWP. 23, RGE. 29, W.4M



ASCM TIES
NOT TO SCALE



BY IAN EMMERSON, A.L.S., 2007-2008
SCALE: 1:2000
0 20 40 60 80 100 120 140 160 180 200 metres

- LEGEND**
- AREA TO BE REGISTERED BOUNDED THUS: [Symbol]
 - STATUTORY IRON POSTS FOUND SHOWN THUS: [Symbol] and marked 396
 - STATUTORY IRON POSTS PLACED SHOWN THUS: [Symbol]
 - TEMPORARY POINT SHOWN THUS: [Symbol]
 - ALBERTA SURVEY CONTROL MARKER SHOWN THUS: [Symbol]
 - SHEET 2 OF 2 CONTAINS REFERENCE CONTROL NETWORK, KEY PLAN OF POINT NUMBERS AND TABLE OF COORDINATES
 - THE POSITION WHERE IRON POSTS ARE TO BE PLACED PURSUANT TO SECTION 47 OF THE SURVEYS ACT ARE SHOWN THUS: [Symbol]
 - CURVE CENTRE CO-ORDINATES SHOWN THUS: [Symbol]
 - REFERENCE MONUMENTS SHOWN THUS: [Symbol]

- ABBREVIATIONS**
The Following Abbreviations May Appear On This Plan
- A.L.S. Arc Distance
 - A.L.S. Alberta Land Surveyor
 - ASCM Alberta Survey Control Marker
 - c.s. countersunk
 - E. East
 - Est. Established
 - FD. Found
 - GPS Global Positioning System
 - H. Hectare
 - I. Statutory Iron Post
 - LS. Legal subdivision
 - M. Meridian
 - Mark. Mark
 - Mk. Marked
 - M.S. Marks
 - N. North
 - NAD North American Datum
 - No. Number
 - Pl. Placed
 - R. Radius
 - Re-est. Re-established
 - Ref. Reference
 - Range Range
 - Sec. Section
 - S. South
 - TUC Transportation Utility Corridor
 - TM. Transverse Mercator
 - Twp. Township
 - W. West
 - R/W Right of Way
 - Δ. Angle Subtended by Arc

NOTES

Distances are in metres and decimals thereof
Datum: NAD83
Projection: UTM
Reference Meridian: 114° Longitude
Combined Scale Factor: 0.999740

Bearings are grid bearings and are derived from GPS observations

TABLE OF CO-ORDINATES

MONUMENTS FOUND AND PLACED IN ACCORDANCE WITH SECTION 47 OF THE SURVEYS ACT

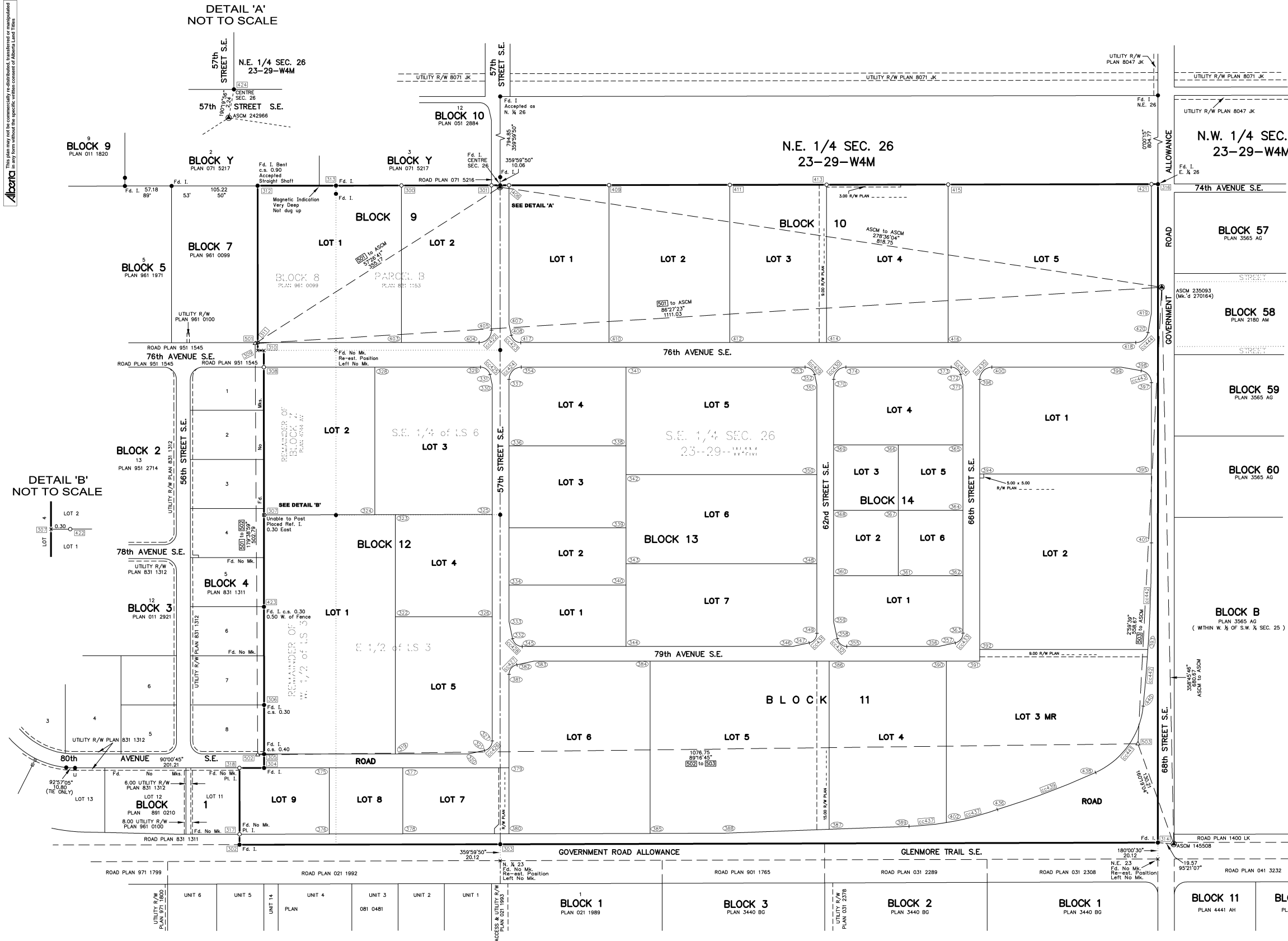
NO.	NORTHING	EASTING	NO.	NORTHING	EASTING	NO.	NORTHING	EASTING	NO.	NORTHING	EASTING
300	5650070.961	3615.327	342	5649717.611	3889.958	384	5649489.681	3919.369	145508	5649266.222	4559.715
301	5650071.158	3723.327	343	5649508.681	3889.958	385	5649278.262	3919.369	242966	5650068.975	3735.693
302	5649265.456	3417.271	344	5649507.681	3889.958	386	5649489.681	4138.380	235093	5649346.547	4545.030
303	5649265.999	3736.132	345	5649507.681	3762.917	387	5649264.262	4138.377	335257	5652236.428	6209.417
304	5649359.193	3447.297	346	5649507.681	4093.374	388	5649279.498	4011.732	378233	5654215.005	2902.598
305	5649376.189	3447.288	347	5649512.045	4113.503	389	5649267.536	4236.030	383315	5647548.693	2904.723
306	5649436.173	3447.255	348	5649508.681	4123.367	390	5649489.681	4281.894	387928	5649469.857	6169.659
307	5649668.317	3447.130	349	5649523.771	4123.367	391	5649489.681	4322.444			
308	5649848.931	3447.011	350	5649717.611	4123.367	392	5649503.928	4322.444			
309	5649868.320	3439.493	351	5649826.880	4123.367	393	5649503.928	4528.088			
310	5649868.334	3447.021	352	5649839.989	4120.581	394	5649718.324	4322.444			
311	5649878.931	3439.490	353	5649848.930	4108.977	395	5649718.324	4532.361	422	5649893.931	3710.327
312	5650070.645	3439.441	354	5649848.930	3761.827	396	5649833.931	4322.444	423	5648990.931	3761.217
313	5650070.617	3535.168	355	5649507.681	4159.258	397	5649826.880	4532.376	424	5649833.930	3761.827
314	5649268.047	4540.234	356	5649507.681	4271.857	398	5649844.680	4519.980	425	5649836.931	3711.937
315	5649278.102	4540.236	357	5649512.045	4292.386	399	5649848.930	4495.973	426	5649302.719	3714.327
316	5650072.619	4540.357	358	5649512.239	4148.209	400	5649848.930	4337.444	427	5649473.591	3758.827
317	5649278.253	3417.265	359	5649517.662	4143.867	401	5649834.683	4532.346	428	5649519.681	3762.917
318	5649359.200	3417.230	360	5649503.931	4143.867	402	5649292.520	4281.694	429	5649836.930	4108.977
319	5649376.189	3607.772	361	5649503.931	4222.908	403	5649878.931	3615.327	430	5649833.942	4158.855
320	5649376.189	3606.345	362	5649503.931	4301.844	404	5649878.931	3710.327	431	5649933.783	4111.355
321	5649390.553	3716.874	363	5649523.793	4301.844	405	5649893.931	3725.327	432	5649519.681	4159.957
322	5649433.879	3607.772	364	5649673.931	4301.844	406	5650071.158	3746.827	433	5649833.784	4289.944
323	5649668.733	3607.772	365	5649753.931	4301.844	407	5649900.995	3746.827	434	5649836.930	4287.554
324	5649668.668	3582.847	366	5649753.931	4222.908	408	5649887.873	3749.613	435	5649833.930	4337.444
325	5649668.041	3728.327	367	5649753.931	4222.908	409	5650071.158	3746.827	436	5649833.784	4289.944
326	5649543.879	3728.327	368	5649753.931	4143.867	410	5649878.931	3669.177	437	5650250.336	4057.857
327	5649362.279	3728.327	369	5649753.931	4143.867	411	5650071.158	4016.877	438	5649448.841	4422.848
328	5649848.931	3582.847	370	5649833.930	4143.867	412	5649878.931	4016.877	439	5649833.931	2545.711
329	5649848.931	3711.837	371	5649826.880	4301.844	413	5650071.158	4135.117	440	5649829.908	4517.376
330	5649826.881	3726.327	372	5649839.989	4299.157	414	5649878.931	4135.117	441	5649833.931	4513.362
331	5649839.990	3723.540	373	5649848.930	4287.554	415	5650072.159	4283.879			
332	5649517.239	3751.168	374	5649848.930	4158.955	416	5649878.931	3761.217			
333	5649537.682	3746.827	375	5649359.189	3617.007	417	5649878.931	3761.217			
334	5649862.681	3746.849	376	5649278.443	3527.007	418	5649878.931	4283.879			
335	5649652.681	3746.843	377	5649359.189	3617.007	419	5649915.433	4532.389			
336	5649752.681	3746.835	378	5649278.998	3617.007	420	5649891.324	4528.134			
337	5649633.930	3746.827	379	5649359.189	3746.827	421	5650072.005	4532.423			
338	5649752.681	3889.958	380	5649278.423	3746.827	422	5649668.318	3447.430			
339	5649652.681	3889.958	381	5649517.662	3746.827	423	5649556.164	3447.160			
340	5649582.681	3889.958	382	5649485.340	3756.385	424	5650071.177	3736.095			
341	5649848.931	3889.958	383	5649489.681	3776.608						

CURVE CENTERS

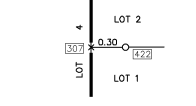
NO.	NORTHING	EASTING
422	5649893.931	3710.327
423	5648990.931	3761.217
424	5649833.930	3761.827
425	5649836.931	3711.937
426	5649302.719	3714.327
427	5649473.591	3758.827
428	5649519.681	3762.917
429	5649836.930	4108.977
430	5649833.942	4158.855
431	5649933.783	4111.355
432	5649519.681	4159.957
433	5649833.784	4289.944
434	5649836.930	4287.554
435	5649833.930	4337.444
436	5649833.784	4289.944
437	5650250.336	4057.857
438	5649448.841	4422.848
439	5649833.931	2545.711
440	5649829.908	4517.376
441	5649833.931	4513.362

REFERENCE MONUMENTS

NO.	NORTHING	EASTING
501	5649877.903	3436.409
502	5649375.253	3439.483
503	5649368.796	4515.870



DETAIL 'B'
NOT TO SCALE



DETAIL 'A'
NOT TO SCALE



THE CITY OF CALGARY
LAND INFORMATION & MAPPING
GEOSPATIAL FIELD SOLUTIONS
Surveyed: C.H. & G.K. Drawn: C.K. Checked: I.E.
File No.: 1075702-SUB01 Date: NOV-03-2008